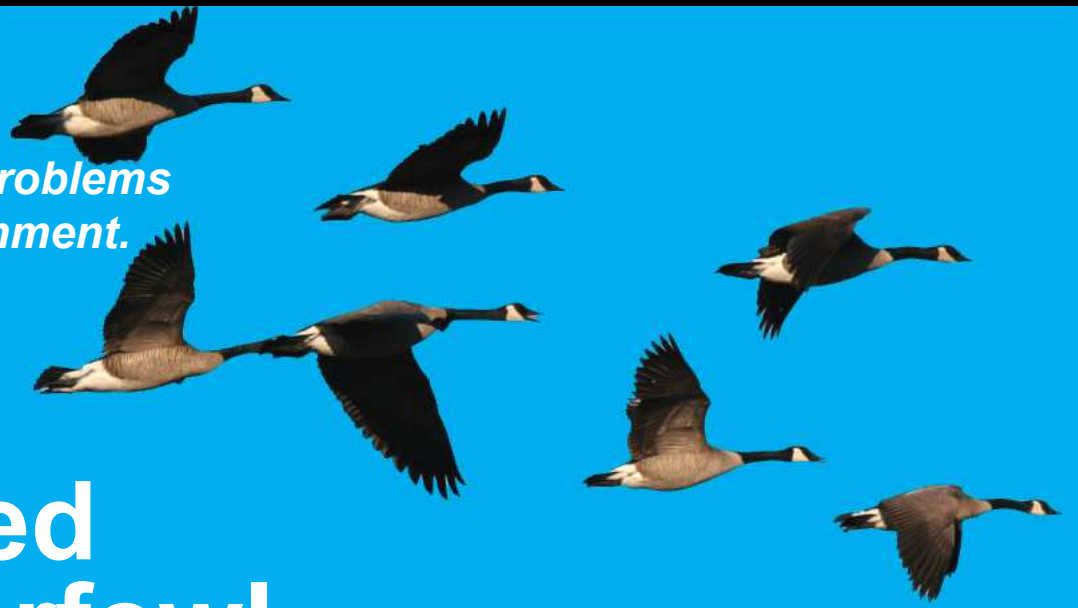
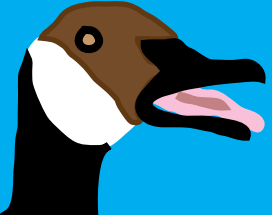


*Feeding waterfowl can create many problems for the birds as well as for the environment.*

**Please  
don't feed  
the waterfowl.**



### **Feeding waterfowl can cause water pollution.**

Too much food can cause ducks and geese to breed quickly and overpopulate the area. Over-population can cause their feces to contaminate the water and lead to serious disease outbreaks and algal blooms due to nutrient over-loading. Aquatic animal species like fish die due to noxious algal blooms. Pathogens, the disease-causing bacteria and viruses associated with animal waste, can also make water unsafe for human use. If pathogens or the indicator bacteria associated with animal waste are found during water testing, shellfish beds may be closed to harvest, beaches may be closed to swimming and drinking water supplies may require expensive filtration or disinfection.

### **Feeding geese can stop birds from migrating.**

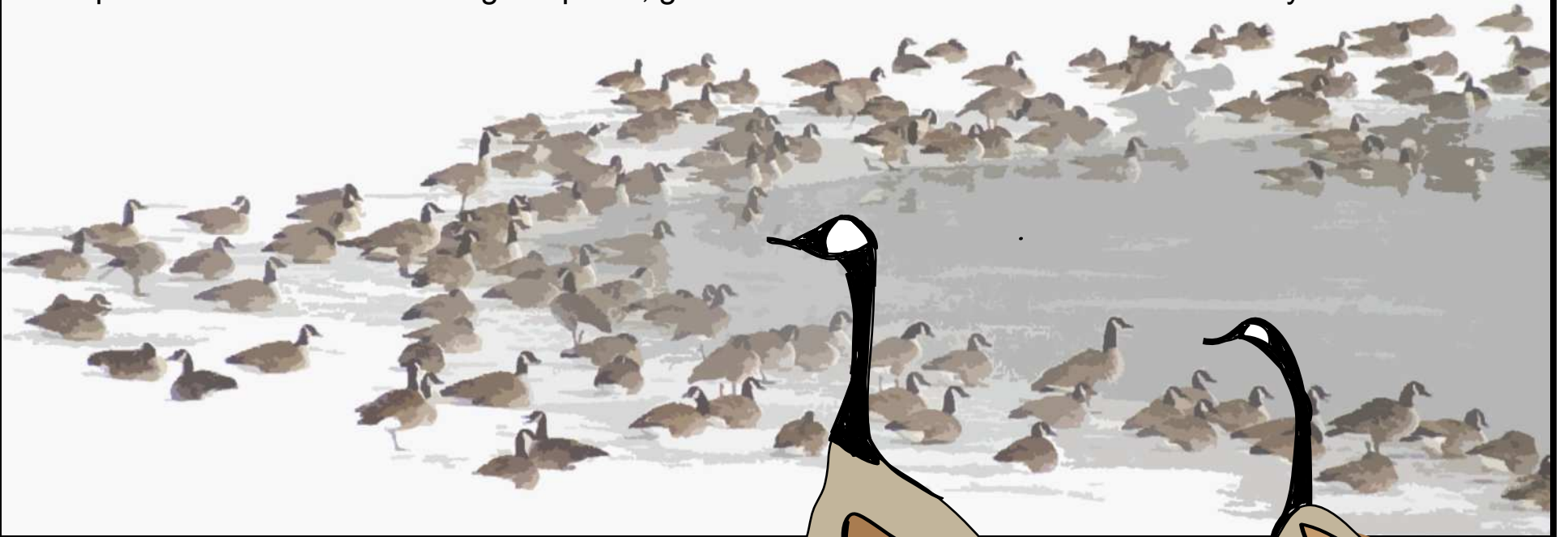
Many urban environments provide sufficient space and food for small populations of waterfowl. However, as thousands of waterfowl concentrate in urban areas where handouts are easily available, the once wild birds can become habituated, lose their fear of people and pick up habits that conflict with the human population and the birds' natural patterns of migration.

### **Feeding waterfowl people food can make them very sick.**

Ducks and geese have a natural diet which includes aquatic vegetation, insects and mollusks. A lack of a balanced diet may cause wing deformity, metabolic bone disease, and starvation. Food handouts can often lead to large numbers of birds competing for very limited food supplies in small, concentrated areas. Ducks and geese are far better off building their reserves by moving from location to location in search of a healthy natural diet than they are living on stale bread or other processed foods.

### **Feeding geese can lead to geese behaving aggressively.**

Lack of fear of people, cars and planes can cause traffic and safety problems. Of increasing public concern is the damage to parks, golf courses and residential lawns caused by waterfowl.



Prepared for the Town of Milford, Massachusetts  
By GZA GeoEnvironmental, Inc.

sources: [www.mass.gov/dfwele/dfw/wildlife/living\\_with\\_geese.htm](http://www.mass.gov/dfwele/dfw/wildlife/living_with_geese.htm), [www.nemo.uconn.edu](http://www.nemo.uconn.edu), [www.portland.org/backyardwildlife](http://www.portland.org/backyardwildlife)  
photo credits: [http://sdakotabirds.com/favorites/canada\\_goose\\_fav1.htm](http://sdakotabirds.com/favorites/canada_goose_fav1.htm), [www.calliebowdish.com/Birds/CanadaGeeseCOPR1](http://www.calliebowdish.com/Birds/CanadaGeeseCOPR1)

