

How does stormwater affect water quality in Milford?

Precipitation which doesn't soak into the ground becomes stormwater runoff. As stormwater flows over driveways, lawns, sidewalks, and roads, it collects dirt, debris, trash, chemicals, and other pollutants. This stormwater can flow directly into a waterbody or into a storm drain in the street.



Stormwater that enters a catch basin is eventually discharged to a waterbody. These discharges are untreated. Therefore, it is important that we all take steps to keep stormwater clean.



Inside this brochure, you will find steps you can take to help. If you have any questions, please feel free to call the Town or review EPA's website at www.epa.gov for more information.

SUMMARY:

Remember these simple things that you can do to help prevent water pollution:

- NEVER DUMP ANYTHING DOWN A STORM DRAIN!
- Minimize use of fertilizers and pesticides.
- Pick up after your pet and dispose of the waste properly.
- Check equipment and vehicles for leaks, and recycle fluids and batteries.
- Compost your yard waste and don't dump it in or near storm drains or waterbodies.
- Store household chemicals away from storm drains and under cover, protected from rainfall. Properly dispose of hazardous wastes and home improvement wastes such as concrete and paint.

**YOU CAN HELP THE
TOWN OF MILFORD
PROTECT AND
IMPROVE WATER
QUALITY:**

**A CITIZEN'S GUIDE TO
STORMWATER
POLLUTION
PREVENTION**



Town of Milford

52 Main Street
Milford, MA 01757
(508) 634-2307

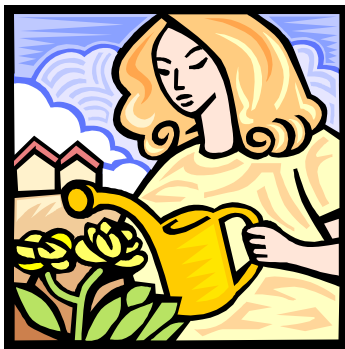
Prepared by Baystate Environmental Consultants, Inc.
East Longmeadow, MA & East Hartford, CT
This brochure is partially based on EPA's "After the Storm" and
"Make Your Home the Solution to Stormwater Pollution"
brochures (January 2003).

SIMPLE STEPS TO REDUCE STORMWATER POLLUTION

LAWN AND GARDEN:

Excess fertilizers and pesticides can wash off and pollute streams. Fertilizers and yard wastes can supply an excess of nutrients to waterbodies causing algal blooms, vegetative growth, and water quality impairment.

- Use pesticides and fertilizers sparingly and only in the recommended amounts. Do not apply directly before forecasted heavy rainfall.
- Compost or mulch yard waste. Don't sweep it into the street, storm drains, or on slopes near streams.



SEPTIC SYSTEMS:

If not maintained properly, septic systems can release nutrients, bacteria, and viruses to nearby waterbodies, causing health issues and other problems.

- Inspect your system every three years and pump the tank as necessary.
- Don't dispose of hazardous wastes in sinks or toilets.



PET WASTE:

Much like septic system leaks, pet waste can be the cause of excess nutrients, bacteria, and viruses entering our waterbodies. Pet waste droppings left on the ground can be washed off by stormwater.

- Remember to pick up your pet's waste, both at home and when out for a walk. Dispose of the waste properly, either in a trash receptacle or by flushing it in the toilet.



VEHICLE CARE:

Washing your car and performing maintenance can send contaminants such as detergents and vehicle fluids (oil, fuels, anti-freeze, etc.) into the drainage system and local waterbodies. Follow these practices:

- Use a car wash facility that treats or recycles its wastewater, or wash your car over your lawn so that the water soaks into the ground.
- Repair automotive leaks and clean up spills immediately.
- Dispose of used oil and batteries at recycling locations.
- Do not dispose of used vehicle fluids in storm drains.

